

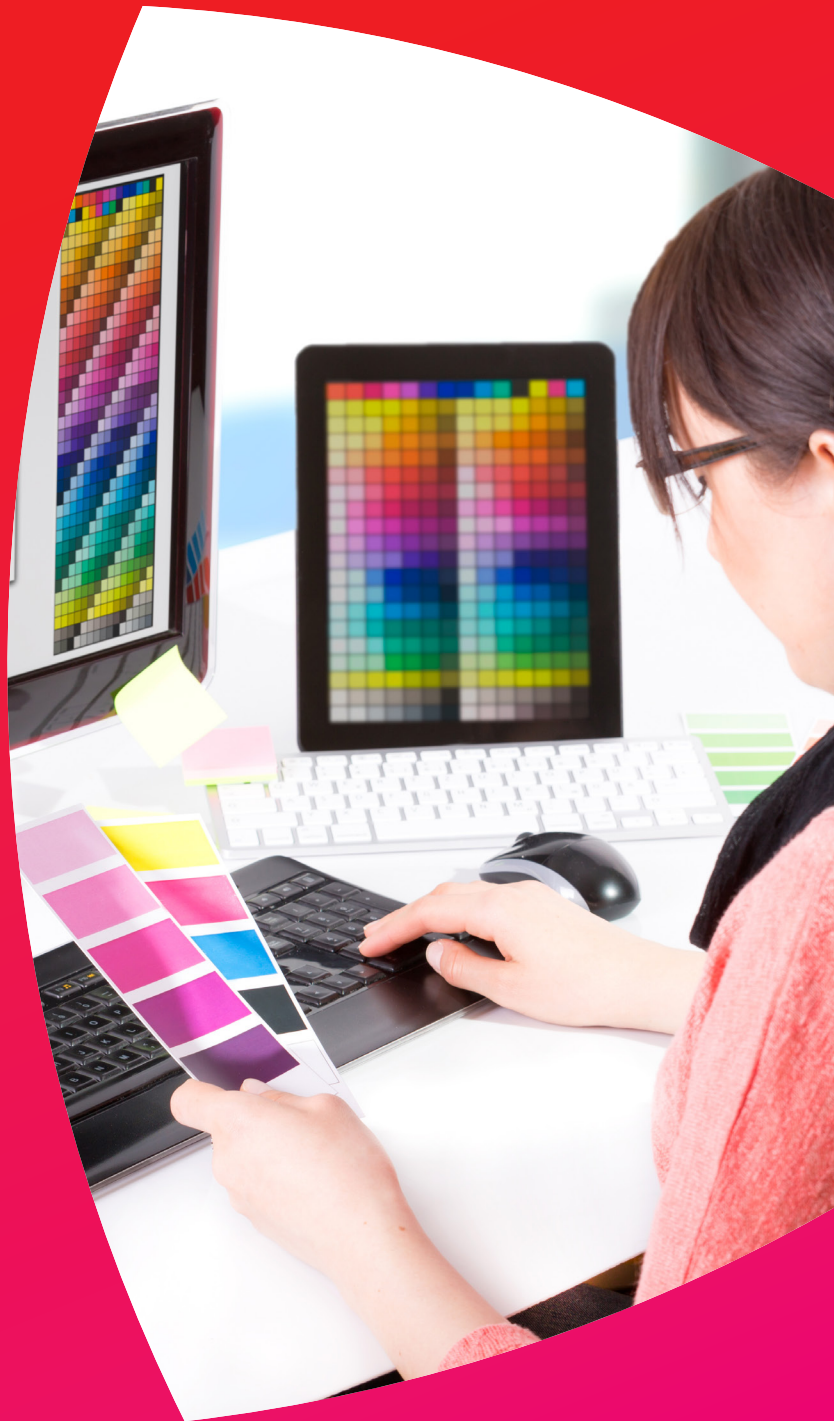
e-STUDIO5560c PRO

e-STUDIO6560c PRO

e-STUDIO6570c PRO

Product brochure

- > Professional A3 colour systems for demanding requirements.
- > Designed to perform high volume at high speed.
- > Superior image quality with brilliant colours for impressive document output.
- > Intuitive usage of sophisticated technology for smooth operation.



KEY FEATURES

- 1 A large colour touch panel allows easy access and intuitive usage of the print, scan, copy and fax functions.
- 2 Impressive speeds of up to 65 pages per minute in colour and up to 75 pages per minute in monochrome ensure fast processing of print jobs.
- 3 Based on state-of-the-art technology and including sophisticated security features, the e-STUDIO6570c PRO series meets all demands of modern offices.
- 4 Impeccable image quality with crystal-clear graphics and brilliant colours - from the first to the last page - thanks to professional colour management.
- 5 Multiple paper sources hold a paper capacity of up to 6,000 sheets. The e-STUDIO5560c PRO can even be equipped with a Tandem Large Capacity Feeder for easy refilling of paper without interrupting running print jobs.
- 6 Various finishing options allow the in-house creation of professional looking documents.

Providing high-speed output, the e-STUDIO6570c PRO series also offers optimal image quality and colour reproduction even for the most demanding tasks.



PROFESSIONAL COLOUR

Toshiba's e-STUDIO6570c PRO series ensures fast processing of comprehensive and complex jobs. The systems are equipped with the EFI Fiery System controller technology including genuine Adobe PostScript 3 RIP. This allows sophisticated colour management and powerful productivity when creating professional documents.

Meet demanding professional colour needs with

- > Fiery Command Work Station
- > Fiery Color Profiler Suite¹⁾
- > ICC profile creation with spectrophotometer¹⁾
- > Fiery VUE
- > Hot Folders¹⁾
- > Spot-on¹⁾
- > In-RIP Auto Trapping¹⁾
- > FreeForm

¹⁾ optional

Enhancing the overall usability the Fiery Command Workstation software enables the effortless management of printing processes and the control of workflows. The intuitive user interface and the linear workflows allow the easy set-up of jobs, generation of previews, monitoring of printing processes and archiving of print jobs for faster repeat.

The optional Hot Folder feature simplifies workflows even more by assigning pre-configured settings to a folder for rapid and hassle-free printing. Users simply need to drag & drop files into one of these folders. The documents are then automatically printed with the specified settings.

The microparticle toner with a large colour gamut allows for particularly high screen ruling and simulation of various printing standards. In addition, the EFI controller makes professional ICC colour management possible; ensuring individual colour matching of CMYK, RGB, CIE Lab and spot colours. The Spot-On option even allows colour libraries to be created and the RGB substitution functionality faithfully reproduces colours - meeting the standards of even the most critical eye.

Thanks to regular automatic calibration the e-STUDIO6570c PRO series ensures constant and reliable colour reproduction for each and every job. Hence, proof and print run can be operated on a single system.



SPECIFICATIONS

General

Print & Copy Speed	Colour: 55/65/65 ppm (A4), 27/30/30 ppm (A3) Monochrome: 55/65/75 ppm (A4), 27/30/37 ppm (A3)
Warm-up Time	Approx. 70 seconds from low power mode
Paper Size & Weight	Cassettes: A5R-320 x 460 mm, 64-256 gsm Tandem LCF ¹⁾ : A4, 64-256 gsm Bypass: A6R-330 x 483 mm, 64-300 gsm, banner paper (up to 313 x 1,200 mm, 90-163 gsm)
Paper Capacity	4x 540 sheets (Cassettes) or 2x 540 sheets (Cassettes) + 2,320 sheets (Tandem LCF ¹⁾ , 1x 100 sheets (Bypass) Maximum 6,000 sheets
Automatic Duplex	A5R-320 x 460 mm, 64-256 gsm
Controller Type	EFI Fiery System, Toshiba e-BRIDGE
Memory	EFI: 80 GB ²⁾ HDD, 512 MB (max. 1,024 MB) RAM e-BRIDGE: 320 GB ²⁾ HDD, 2.0 GB RAM
Control Panel	10.4" (26.4 cm) Colour Touch Panel
Interface	10Base-T/100Base-TX/1000Base-T (incl. IPv6), High Speed USB 2.0
Dimensions & Weight	980 x 698 x 1,540 mm (W x D x H), ~ 252 kg

Print

Resolution	600 x 600 dpi, 8 bit per colour channel 1,200 x 1,200 dpi (2 bit, PostScript driver only)
Page Description Language	Adobe PostScript 3, native support for PDF1.4-1.7, PDF/X, TIFF 6.0 and EPS
Supported Systems	Windows 8/7/Vista/Server 2008/Server 2003 (32/64 bit), Windows Server 2012 R2/Server 2008 R2 (64 bit), Mac OS X 10.4.11-10.10, Novell NetWare (NDPS)
Colour Modes	Auto-Colour (ACS), Colour, Twin Colour, Monochrome
Colour Settings	ICC based in-RIP colour management: CMYK, RGB, CIE Lab and spot colour support, device ICC link profiles support

Scan

Resolution	Maximum 600 x 600 dpi, 8 bit per colour channel
Scan Speed	Colour & Monochrome: 77 ipm (300 dpi)
Scan Modes	Auto-Colour (ACS), Colour, Greyscale, Monochrome
File Formats	JPEG, Multi/Single Page TIFF/XPS/PDF, SecurePDF, Slim PDF, Searchable PDF ³⁾ (and other formats like DOCX, XLSX, RTF, TXT, PDF/A) ³⁾
Scan Functions	Scan to USB, Scan to E-Mail, Scan to File (SMB, FTP, FTPS), Meta Scan ³⁾ , Scan to Box (e-Filing, Mailbox), Scan to "Hold" Queue

Copy

Resolution	Scan: 600 x 600 dpi, 10 bit per colour channel Print: 600 x 600 dpi, 8 bit per colour channel 2,400 x 600 dpi, monochrome with smoothing
First Copy Output Time	Colour: Approx. 6.5 seconds Monochrome: Approx. 5.3/5.3/4.6 seconds
Zoom	25-400% (Platen), 25-200% (RADF)
Copy Modes	Text, Text/Photo, Photo, Printed Image, Map, Image Smoothing
Colour Modes	Auto-Colour (ACS), Full Colour, Twin Colour, Mono Colour, Monochrome
Colour Settings	Hue, Saturation, Colour Balance, RGB adjustment 5 one-touch modes
Copy Functions	Electronic Sort, Rotate Sort, ID Card Copy, Edge Erase, 2-in-1 / 4-in-1 mode

Fax³⁾

Communication	Super G3, G3 - (opt. 2 nd line), Internet Fax T.37
Transmission Speed	Approx. 3 seconds per page
Compression	JBIG, MMR, MR, MH
Fax Memory	1 GB Transmission/Reception
Network-Fax	Driver for Windows 8/7/Vista/Server 2008/ Server 2003 (32/64 bit), Windows Server 2012/ Server 2008 R2 (64 bit)
Incoming Fax Routing	To shared folders (SMB, FTP, IPX/SPX), E-Mail, e-Filing

System & Security

Device Management	Command WorkStation for monitoring and managing of print jobs, Top Access for remote administration and configuration
System Features	e-Filing document server for secure storage, Document distribution and Print-on-Demand (1 public box, 200 user boxes), 12,060 one-touch templates for storage of personalised settings or workflows, Scan/Fax Preview, Rip-while-Print, e-BRIDGE Open Platform ³⁾ , Embedded Web Browser, Job Skip, Black overprinting, Composite overprinting
Accounting & Security	Role Based Access, LDAP support, 1,000 department & 10,000 user codes, Private print, Standard data encryption, Data Overwrite Enabler ³⁾ , IP and MAC address filter, Port filter, Support of SSL and IPsec protocols, IEEE802.1x support, Scan to Secure PDF

¹⁾ e-STUDIO5560c PRO Tandem LCF version only

²⁾ The actual formatted capacity is less. Available capacity will also be less if software applications are pre-installed.

³⁾ Optional

OPTIONS

LARGE CAPACITY FEEDER	2,500-sheet capacity, A4, 64-256 gsm
MULTI-STAPLE FINISHER	2 trays, 3,250-sheet capacity 50-sheet multi-position stapling A5R-A3, 60-105 gsm (stapling mode)
SADDLE-STITCH FINISHER	2 trays, 3,250-sheet capacity 50-sheet multi-position stapling 5-sheet center folding Saddle-stitched booklets of up to 60 pages A5R-A3, 60-105 gsm (stapling mode)
HOLE PUNCH UNIT	Available in 2 holes (E), 4 holes (F)
GRAPHIC ARTS KIT	EFI Spot-On, EFI Hot Folders, EFI Auto Trapping
EFI COLOR PROFILER	Proofing Software incl. ES-2000 (M2 mode) Spectrophotometer

SIDE EXIT TRAY
FAX BOARD
DATA OVERWRITE ENABLER
META SCAN ENABLER
UNICODE FONT ENABLER
e-BRIDGE RE-RITE

CONFIGURATION



About Toshiba Tec

Toshiba TEC UK Imaging Systems LTD is part of the globally operating Toshiba TEC Corporation, active in various high-tech industrial sectors.

Toshiba TEC Corporation is a leading provider of information technology, operating across multiple industries. With headquarters in Japan and over 80 subsidiaries worldwide, Toshiba TEC Corporation helps organisations transform the way they create, record, share, manage and display information.

For more information please contact us:

TOSHIBA TEC UK Imaging Systems LTD

Abbey Cloisters, Abbey Green, Chertsey, Surrey KT16 8RB

Telephone

+44 (0)843 2244944

Fax

+44 (0)843 3512024

Website

www.toshibatec.co.uk

